



A.Y. 2025/26

guide exchange graduate

written by
JOYCE COLING





A quick guide to Exchange programs for graduate students.

*≠ IM Global Experience and
FIN Global Experience Track*

index

- 01 INTRODUCTION**
- 02 TAXES**
- 03 SCHOLARSHIPS**
- 04 REQUIREMENTS**
- 05 APPLICATION
AND SELECTION**
- 06 WAITING LIST E
RINUNCIA**
- 07 HOW TO
CHOOSE?**
- 08 REMINDERS**

All information in this PDF is taken from the Bocconi website and its guides; it has been reworked and summarized in a single file without any intention of replacing official documents.





Introduction

The Exchange program provides the opportunity to spend a study period abroad, lasting one semester, at a partner university, during the **SECOND YEAR** of your master's degree course.

Students regularly enrolled in the **FIRST YEAR** of the course can apply

It will be possible to convert up to a **MAXIMUM of 30 CREDITS** (regardless of the number of exams).

For the exam recognition procedure, refer to "Recognition of exams passed in foreign universities" on the You@B agenda



Students participating in the exchange program are **EXEMPT** from paying fees at the **PARTNER UNIVERSITY**.

However, the **STUDENT** is responsible for his/her own **travel, food and accommodation** expenses and any other additional expenses related to the experience to be carried out.

In particular, **ACCOMMODATION AND TRAVEL ARE EXPLICITLY EXCLUDED** from the agreements between Bocconi University and partner schools, but **may be made available by them**.

taxes



Scholarships

INTERNATIONAL MOBILITY GRANT

A **participation fee**, to encourage participation in exchange programs, is calculated from year to year, based on the resources available to be used for this purpose.

The funds are taken from a mix of resources including Erasmus+ funds, ministerial funds and funds linked to the right to study.

Obviously, **the provision of the contribution is not automatic**, but is subsequent to the evaluations of the Office which take into account: any conditions of economic disadvantage verified by the University on the basis of the economic-patrimonial condition of the students, destination and actual duration of the mobility experience.

The granting of scholarships will be subject to the requirements set by the various national or international institutions.

For more information, visit
the Bocconi website
!! CLICK HERE !!





CREDITS & GPA

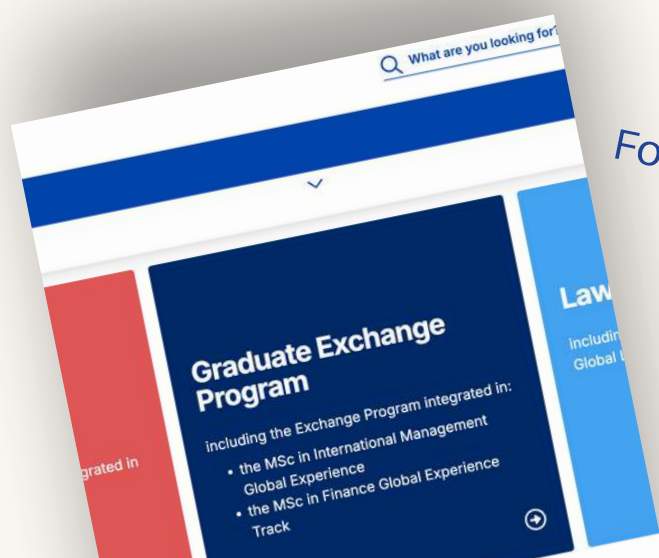
Master's Degree Requirements

Students

- enrolled in the **1st year** of master's degree courses
- with at least **16 credits of the 1st semester** recorded in the career
- minimum weighted average of **22/30**

Additional academic requirements for university

Some universities have additional academic requirements (e.g. minimum average, degree grade). For more details, please refer to the brochure relating to your system and the academic year of selection (Destinations & other tools section).



For more information
information
!! CLICK HERE !!





LANGUAGE REQUIREMENTS

To be eligible for the Exchange Program it is always required to have a minimum level of English, French, German, Spanish or Portuguese according to the institutions you are applying for.

Level B2 for English proved automatically through enrollment in a **MSc taught in English.**

Level B1 or higher for French, German and Spanish, proved by one of the options listed below:

- *Citizenship*
- *International Certification*
- *University Language Exam*
- *Secondary School Diploma or Bachelor's Degree* *
- *Previous Exchange Program completed* *

* Please contact the Study Abroad office providing any document which can be useful to evaluate your case

Level A2 or higher for Portuguese, proved by one of the options listed before or by the enrollment to the Bocconi Language Center course.



⚠ ATTENTION - CITIZENSHIP ⚠

International students or students with dual citizenship CANNOT participate in the exchange abroad in the country in which they hold citizenship

SPECIAL REQUIREMENTS

There may be **additional academic requirements** requested by the specific host university (e.g. minimum average, language certification, specific IELTS scores...)

Additional language requirements are listed in the destination brochure under “**Additional language requirements**”

Finally, the **certifications** DO NOT need to be delivered to the language center, but must be uploaded **DIRECTLY TO THE PORTAL** at the time of application.





Application & selection

When?

APPLICATION OPENING: **February 25th**

APPLICATION DEADLINE and

DOCUMENT UPLOADING: **March 3rd (at 3pm)**

How?

Online application via **Punto Blu**

1. Upload certifications in the “**Attachments**” section
(SURNAME_NAME_SERIAL
NUMBER_CERTIFICATION)
2. Print the **registration receipt**

During the application phase, **up to a maximum of 10** destinations can be entered (min. 1 – max. 10) in order of preference (where destination 1 is the preferred one)

ATTENTION: It is NOT possible to choose the exchange semester, which will be chosen in case of selection and acceptance



DESTINATIONS

Brochure EXCHANGE PROGRAM 2025/26 Graduate school



Universities where you have the possibility to find many courses of your degree course (even if the application can be submitted by students of any course) show the wording **“RECOMMENDED FOR”**

Universities where you can only apply if you are enrolled in the specified degree course show the wording **“RESERVED FOR”**



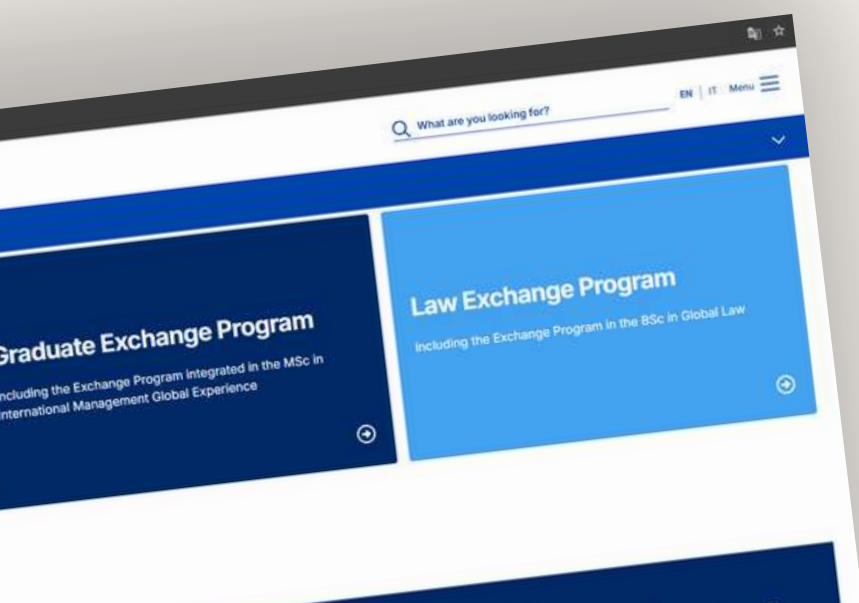
SCORE CALCULATION

The selection is based on merit; for the Master's Degree Courses, the weighted average (MP) of the exams is considered (50%), the number of credits obtained divided by the maximum number of credits obtainable (20%) and the three-year degree grade (30%).

The result is then multiplied by 1000, to give the final score.

$$\left[\frac{\text{Student WA} \times (\text{WA of all MSc programs} / \text{WA of student's MSc program})}{31} \right] \times 0.5$$
$$+$$
$$\left[\frac{\text{Student NC} \times (\text{average NC of all MSc programs} / \text{average NC of student's MSc program})}{\text{MAX NC of student's MSc program}} \right] \times 0.2$$
$$+$$
$$\left[\frac{\text{Final degree grade of the Bachelor program}}{111} \right] \times 0.3$$

The result will be then multiplied by 1000



For more information
information
!! CLICK HERE !!





COMMUNICATION

About a month after submitting the application, you will receive a confirmation email to your **@studbocconi** address. You will then be able to check the assignment on PuntoBlu.

ACCEPTANCE

After the publication of the rankings, the student will have to confirm the starting semester (if there is a possibility of choice). It will be his/her responsibility:

Complete the application for the foreign university

1. Obtaining documents for expatriation
2. Provide any documents in time to benefit from the Erasmus scholarship





waiting list & withdrawal

Waiting list

Students who are not selected will be included in the waiting lists for the destinations for which they have applied.

In the event of cancellations, the Study Abroad Office will proceed by contacting the students on the waiting list via email at their institutional address, in order of placement in the ranking.

Any student who is **admitted and withdraws will be excluded from the program and will not be able to remain on the waiting list** for other destinations for which he/she had applied.

Withdrawal

Upon publication of the rankings, the selected student who decides to withdraw must communicate his/her decision by refusing the assigned destination **via Punto Blu**, according to the procedures and timeframes indicated on the website or in the selection email received at the institutional address.

Any student who decides to withdraw may **NOT**: be assigned to one of the other destinations chosen during the application phase or with places remaining available;

apply for other selections of the Exchange program, within the current academic career;

go abroad as a Free-Mover student, as part of their ongoing academic career.



Exchange report

The reports are destination-specific surveys filled out by students. They focus on courses taken, accommodations, average cost of living, etc.

They are very useful for getting testimonials from students and understanding if the foreign university you are applying for can actually give you what you are looking for.

To view the reports: [International Mobility - reserved area](#)

> “Click to access” (top right from PC, bottom from SMARTPHONE) > Enter your yoU@B diary access credentials > “Undergraduate students” (Exchange Area) > “Exchange students 2007-2008” (Students’ Report) > Choose the year to view and then the destination

how to choose?



At the host university

Many universities have strict DEADLINES: it is essential to check your mailbox every day, through which you can be contacted by the Study Abroad office. In addition, it is necessary to deliver to this office any **documents** requested (original + copy).

Passport and Visa

After the selection process you will be asked to provide a **copy of your valid passport** for the issuance of the necessary documents and to obtain the visa, according to the timeframes.

Erasmus

Students selected for European Universities, which are part of the **Erasmus+ programme**, will be able to benefit from a scholarship (see the “scholarships” section).

reminder



Insurance

You will need to have insurance that is valid for the entire period of study abroad. Some universities have a specific insurance plan.

Accommodation

Accommodation is **your own responsibility**, as is travel, and can be of various types. It is advisable to inquire at your host university and read the reports of Exchange students who have already been to that destination.

Safety

Before leaving, Bocconi encourages you to register on the [Viaggiare Sicuri - MAE, Dove siamo nel mondo - MAE](#) e [International SOS](#)

PER DUBBI O SUGGERIMENTI SULLA GUIDA



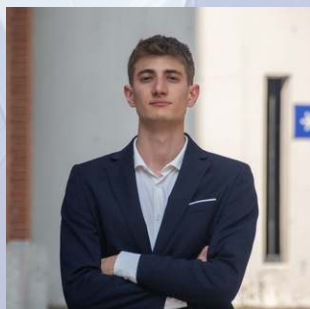
JOYCE COLING

rina.coling@studbocconi.it

[@joyce.coling](https://www.instagram.com/joyce.coling)

+39 3911092533

PER INFO SULL'AREA DIDATTICA

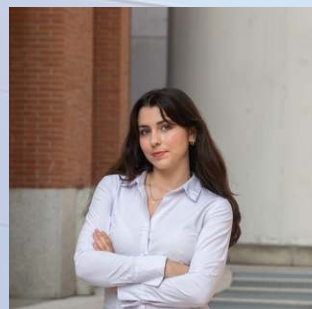


NICOLA COMBINI

nicola.combini@studbocconi.it

[@nicolacombini](https://www.instagram.com/nicolacombini)

+39 3661052675



MARTINA PARMEGIANI

martina.parmegiani@studbocconi.it

[@martina_parmegiani05](https://www.instagram.com/martina_parmegiani05)

+39 3445120057



MARK OLANO

mark.olano@studbocconi.it

[@mark_olano_](https://www.instagram.com/mark_olano_)

+39 3713723943



TEACHING DIVISION